

---

---

---

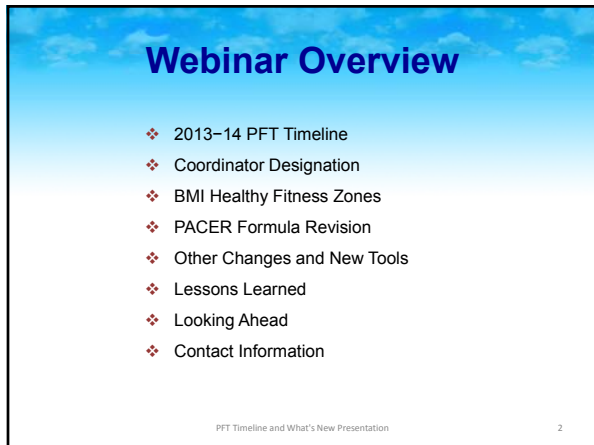
---

---

---

---

---



---

---

---

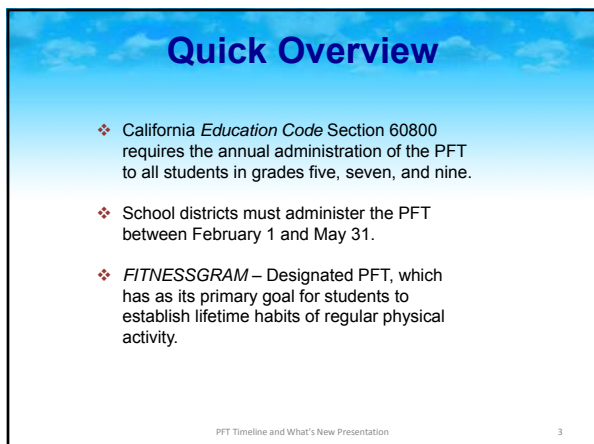
---

---

---

---

---



---

---

---

---

---

---

---

---

## 2013–14 Timeline

February 1, 2014

- ❖ PFT administration window opens.
  
- ❖ California PFT Web site secure District Portal at <http://www.pftdata.org/> opens for data submissions.
  
- ❖ Within 48 hours after PFT data are submitted by a local educational agency (LEA), the data correction window opens for that LEA.

PFT Timeline and What's New Presentation 4

---

---

---

---

---

---

---

---

## 2013–14 Timeline

May 31, 2014

- ❖ PFT administration window closes.

June 30, 2014

- ❖ District Portal closes for data submissions and corrections.

PFT Timeline and What's New Presentation 5

---

---

---

---

---

---

---

---

## 2013–14 Timeline

July 7, 2014

- ❖ District Portal reopens for data submissions (i.e., data upload) and corrections.
  
- ❖ Preliminary PFT student scored data file will be available from the Reports tab in the District Portal.

July 31, 2014

- ❖ PFT summary reports preview through CDE DataQuest site opens. (Preview includes data submitted and corrected through June 30 deadline.)

PFT Timeline and What's New Presentation 6

---

---

---

---

---

---

---

---

## 2013–14 Timeline

**August 31, 2014**

- ❖ District Portal closes for data submissions and corrections.
- ❖ PFT preview on CDE DataQuest Web site closes.

**September 4, 2014**

- ❖ Final PFT student scored data file is available from the District Portal.
- ❖ To access this final scored data file, the 2014–15 coordinator designation form must be completed and approved.

PFT Timeline and What's New Presentation 7

---

---

---

---

---

---

---

---

## 2013–14 Timeline

**October 2014**

- ❖ PFT Annual Public Release
- ❖ Final PFT summary reports available through CDE DataQuest site. (Final includes data submitted and corrected through August 31 deadline.)
- ❖ Final PFT summary and individual student reports available from the District Portal.

**February 1, 2015**

- ❖ Deadline for posting School Accountability Report Card, or SARC, on local Web sites.

PFT Timeline and What's New Presentation 8

---

---

---

---

---

---

---

---

## Coordinator Designation

- ❖ Every LEA must designate a PFT Coordinator and obtain a current year password.
- ❖ A new form is required each year, even if the contact information has not changed. Forms were due by November 1, 2013.
- ❖ Online form is available from the California PFT Web site at <http://www.pftdata.org>.
- ❖ September 2, 2014 - 2013–14 passwords will be deactivated, and 2014–15 PFT Coordinator Designation Forms can be submitted beginning on this date.

PFT Timeline and What's New Presentation 9

---

---

---

---

---

---

---

---

## Healthy Fitness Zones (HFZs)

- ❖ HFZ for Body Mass Index (BMI) for males and females and for most ages have changed.
- ❖ Better coincide with the health-related body fat standards from the Centers for Disease Control and Prevention (CDC).
- ❖ HFZ charts found on the Administrative Documents page of the California Department of Education (CDE) PFT Web page at <http://www.cde.ca.gov/ta/tg/pf/pftadmin.asp>.

PFT Timeline and What's New Presentation 10

---

---

---

---

---

---

---

---

## PACER Formula Revised

- ❖ PACER will continue to be reported in terms of  $VO_2$ max.
- ❖ Flexibility for teachers and schools in calculating  $VO_2$ max for the PACER without the need for height and weight (i.e., BMI).
- ❖ New formula requires only number of 20-meter laps, age and gender.
- ❖ PACER Look-Up and Goal Setting Table posted on the CDE PFT Program Resources Web page at <http://www.cde.ca.gov/ta/tg/pf/pftresources.asp>.

PFT Timeline and What's New Presentation 11

---

---

---

---

---

---

---

---

## New Tools

### Duplicate Report

- ❖ Identify student (by first name, last name, and school code) for whom a record was removed as duplicate.
- ❖ First record is read in by the system; remaining additional record(s) for the same student will not be uploaded into the system.
- ❖ Duplicate identified on the basis of first name, last name, and Statewide Student Identifier (SSID).

### Individual Student Score Reports

- ❖ Allow for batch processing.

PFT Timeline and What's New Presentation 12

---

---

---

---

---

---

---

---

## New Tools

Online Calendar

- ❖ Provides activities and dates organized by month.
- ❖ Provides a list of suggested activities for PFT coordinators to use in organizing for the PFT.
- ❖ Major or key activities are highlighted in bold.
- ❖ Available from the Resources page of the California PFT Web site at <http://www.pftdata.org/>.

PFT Timeline and What's New Presentation 13

---

---

---

---

---

---

---

---

## Other Changes

- ❖ Participation Level and Reason for Participation Level fields are **no** longer required.
- ❖ These two fields have been renamed "Filler" in the file layout and should be left blank in order to maintain the same file layout.
- ❖ Participation Level will be calculated during the scoring. Reason for Participation Level is no longer collected nor reported.

PFT Timeline and What's New Presentation 14

---

---

---

---

---

---

---

---

## FITNESSGRAM 10 (FG10)

- ❖ Utilizes the revised PACER formula.
- ❖ FG8 is no longer available for sale. Users of FG8 and FG9 are encouraged to upgrade to the Web-based FG10.
- ❖ More information on this software is found on the Human Kinetics *FITNESSGRAM* Web site at <http://www.fitnessgram.net/>.

PFT Timeline and What's New Presentation 15

---

---

---

---

---

---

---

---

## Lessons Learned

- ❖ Log in and check your submission once you receive the automated confirmation that processing of the uploaded file is complete.
- ❖ Data can be reviewed, corrected, or a new file submitted any time between February 1 and June 30, 2014 and between July 7 and August 31, 2014.

PFT Timeline and What's New Presentation 16

---

---

---

---

---

---

---

---

## Lessons Learned

BIA and BMI

- ❖ BIA field is for the percent body fat obtained using a Bioelectric Impedance Analyzer.
- ❖ BIA is not the same as BMI or Body Mass Index.
- ❖ BMI is a value calculated during the scoring from the student height and weight information. (BMI is not a value calculated by the LEA for PFT purposes.)
- ❖ Only the BMI obtained from the student height and weight is used in the calculation of VO<sub>2</sub>max for One-Mile Run.
- ❖ About 9000 students had BIA values reported, which equaled the calculated BMI (within one tenth of a decimal point).

PFT Timeline and What's New Presentation 17

---

---

---

---

---

---

---

---

## Lessons Learned

Data Outside of the Valid Ranges

- ❖ "1" is the lowest possible score for the Curl-Up, Push-Up, Modified Pull-Up and PACER.
- ❖ "12" is the highest possible score for the Trunk Lift and Back-Saver Sit and Reach.
- ❖ Left and right sides must be reported for Shoulder Stretch and Back-Saver Sit and Reach.
- ❖ Complete data required for Aerobic Capacity and Body Composition.
- ❖ A "0" should be used for test where student scored a 0 such as the Flexed-Arm Hang, Trunk Lift, or Back-Saver Sit and Reach.
- ❖ Non-tested areas are left blank.

PFT Timeline and What's New Presentation 18

---

---

---

---

---

---

---

---

## Lessons Learned

**School Code Errors**

- ❖ School Code is missing.
- ❖ School Code is not valid for the LEA.
- ❖ 0000000 is not an allowable School Code.
- ❖ 0000001 is only allowed for Non-Public Nonsectarian School (NPS) students.
- ❖ CCDDDDD is only allowed for students who are enrolled in independent study or home hospital programs.
- ❖ Verify School Codes by searching the CDE California School Directory Web page at <http://www.cde.ca.gov/re/sd/>.

PFT Timeline and What's New Presentation 19

---

---

---

---

---

---

---

---

---

---

## Lessons Learned

**June Test Administration**

- ❖ PFT administration window is February 1 to May 31.
- ❖ Absolutely no PFT administration allowed after May 31.
- ❖ Any student record submitted with PFT Start Date after May 31 or before November 1 will flag with an error.
- ❖ Student records with errors are not scored.

PFT Timeline and What's New Presentation 20

---

---

---

---

---

---

---

---

---

---

## Looking Forward

**Increase in Warnings**

- ❖ Participation Level is no longer required.
- ❖ Students without data in all six areas of the PFT will flag with warnings.

**10-digit SSIDs**

- ❖ In 2014-15, PFT will use demographic data from CALPADS.
- ❖ SSIDs will be necessary to match student demographic data with the fitness data submitted by the LEAs.

PFT Timeline and What's New Presentation 21

---

---

---

---

---

---

---

---

---

---

## Key Contacts

Physical Fitness Test  
High School and Physical Fitness Office  
Assessment Development and Administration Division  
Phone: 916-445-9449  
E-mail: [pft@cde.ca.gov](mailto:pft@cde.ca.gov)

Physical Education Curriculum  
Michael Lee  
Education Programs Consultant  
Professional Learning Support Division  
Phone: 916-323-5798  
E-mail: [mlee@cde.ca.gov](mailto:mlee@cde.ca.gov)

PFT Timeline and What's New Presentation 22

---

---

---

---

---

---

---

---

## Key Contacts

PFT Help Desk  
San Joaquin County Office of Education  
Phone: 888-852-9681  
E-mail: <https://pftdata.org/contact.aspx> (preferred)

PFT Timeline and What's New Presentation 23

---

---

---

---

---

---

---

---

## Questions and Answers



PFT Timeline and What's New Presentation 24

---

---

---

---

---

---

---

---